



Fort Wayne Riverfront Phase 1 Park Foundation Pavilion



Weekly Progress Update for Week Ending 4/7/19

Past Week of Progress

- | | |
|---|---|
| <ul style="list-style-type: none"> * Continue Installation of Pre-Finished Black Trim at T&G Cedar Canopy Soffit * Fire Alarm Testing/Inspection * Install Plumbing Insulation Within Rill Room and Mechanical Room * Install of Stainless Steel Counter Along North Wall of Serving Area | <ul style="list-style-type: none"> * Complete Miscellaneous MEP Finishes for Overhead Inspection & Fire Alarm Testing * Cut in MEP Finishes Installed in Acoustical Ceiling Tiles * In Wall Plumbing Rough-Ins at Vendor Space * Delivery of S.S. Counter Top for Serving Area and Associated Sink @ Casework |
|---|---|

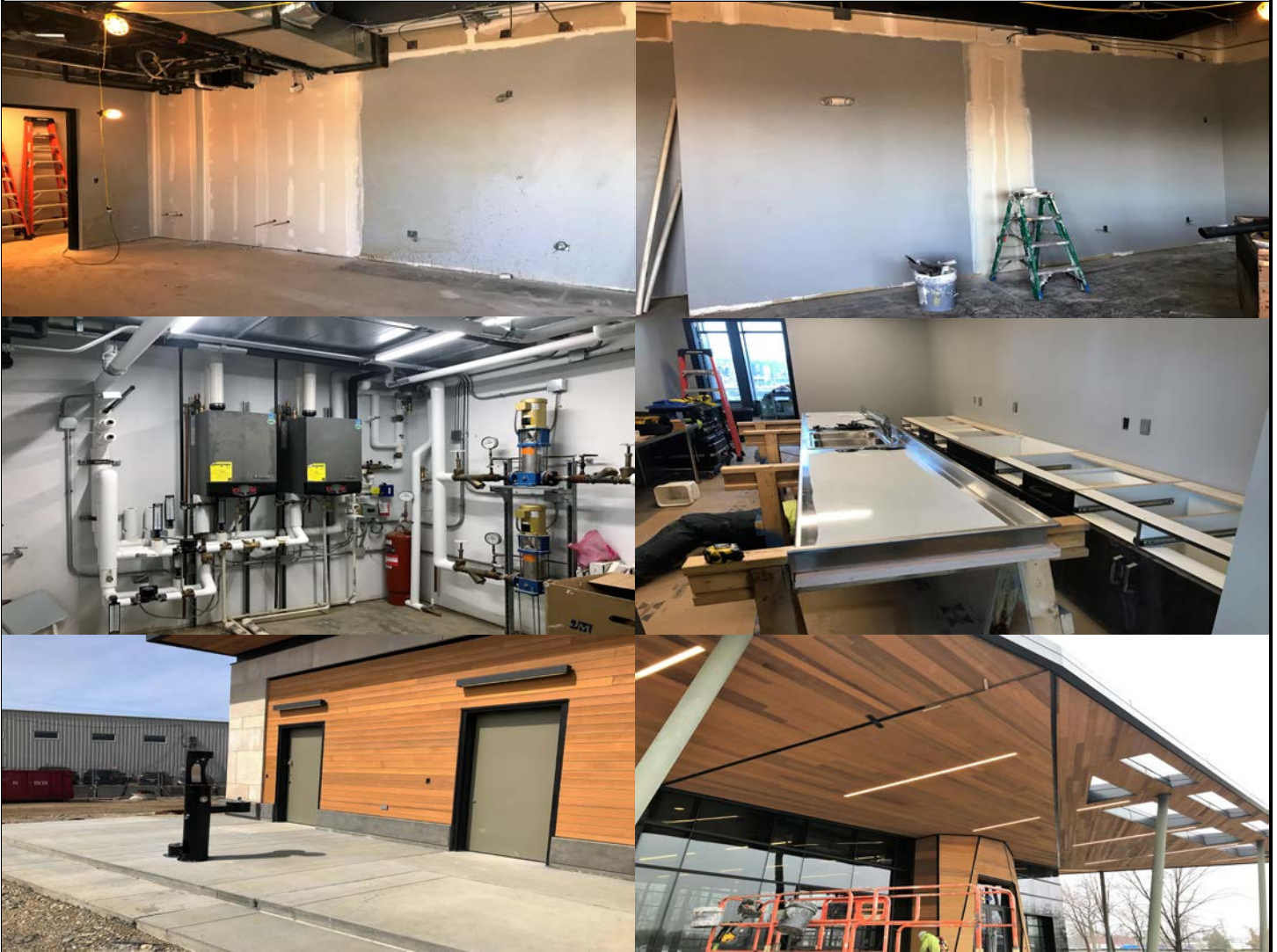
Next Week Look Ahead

- | | |
|--|---|
| <ul style="list-style-type: none"> * Mud Walls/Touch-Up Paint Within Vendor Space and Event Space * Continue Installation of Pre-Finished Black Trim at T&G Cedar Canopy Soffit * Start Installation of Back Ceiling Tile Within Vendor Space * Floor Prep/Clean and Grind Vendor Space Floor for Stain * Complete Fire Alarm Systems and Re-Test | <ul style="list-style-type: none"> * Installation of Black Acoustical Ceiling Grid Within Vendor Area * Power Wash Exterior Concrete Under Pavilion Canopy * Start Installation of 4'x4' Ceiling Tile Within Event Space * Install Charcoal Pre-Cast Cap @ Pavilion Dumpster Enclosure * Make Electrical Connections Within Rill Room for Kids Canal Water Feature |
|--|---|

Milestone Events

- | | |
|---|---|
| <ul style="list-style-type: none"> * Complete Pre-Finished Black Trim at T&G Cedar Canopy Soffit Week of 4/15/19 | <ul style="list-style-type: none"> * Complete Trubble Brewery Vendor Space Week of 4/15/19 |
|---|---|

Park Foundation Pavilion Progress Photos





Fort Wayne Riverfront Phase 1

River Work North/South Shore & Misc. Site Excavation



Weekly Progress Update for Week Ending 4/7/19

Past Week of Progress

- | | |
|---|---|
| <ul style="list-style-type: none"> * Rework/Detail of Structural Steel Sections for Parkview TCT * Power Wash Harrison Street Bridge Handrails and Prep Sidewalk Bar for Pour * Complete Form, Prep & Pour Flatwork Along the East Side of Kids Canal Water Feature * Complete Form, Prep, & Pour S6 Grand Stairs @ Ambassador Ent. Amphitheatre * Continue to Bring Site Up to Subgrade for Flatwork on North and South Shore * Complete Form, Prep, & Pour S7AB Upper Stairs/Landing @ East Donor Rec. @ Turf * Continue IPE Deck Infill at Parkview TCT Open Sections * Set Electrical Panel at NW Corner of Harrison Street Bridge Within Landscaping * Complete Ipe Deck Concrete Piers and Bring Up Grade Around Piers at IPE Deck Area * Prep Site Light Pole Base Foundations | <ul style="list-style-type: none"> * Install Pavers at Harrison/Superior Intersection Moving West Down Superior ROW * Form, Prep, and Pour Seawall Bollards at Ambassador Ent. Amphitheatre * Complete Prep, & Pour of W3E,D,C Terraced Seating at Ambassador Ent. Amphitheatre * Form, Prep, & Pour Ramp From Ambassador Ent. Amphitheatre to Old Nat. Bank Plaza * Form, Prep, and Pour Superior Street ROW to Wells Street Entrance * Form, Prep, and Pour Switchback Flatwork at the South and East Perimeter of Playground * Remove Parkview TCT Handrail Mock-Up From Erected Steel Section * Grout Parkview TCT Locations @ Top of Column/TCT Steel Connections * Pour North Sweetwater Bandshell Seatwall Footing & Form, Prep, and Pour Seatwall * Continue Electrical Site Conduit Runs and Rough-Ins |
|---|---|

Next Week Look Ahead

- | | |
|--|--|
| <ul style="list-style-type: none"> * Survey Final TCT Sections for Handrail Field Measurements * Continue IPE Deck Infill at Parkview TCT Open Sections * Excavate and Grade North and South Site for Concrete and Landscaping * North Shore Footing Excavations For Grand Stair Case * Install Drain Piping on the North Shore Site * Prep Harrison Street Bridge Deck for Overlay Coating Installation * Continue to Excavate, Prep, and Pour Site Light Pole Bases * Form, Prep, and Pour Flatwork Sections From Sculpture to Sweetwater Bandshell * Prep and Pour Slab on East Side of Sweetwater Bandshell * Grind and Power Wash Kids Canal Water Feature for Fluid Applied Coating * Form, Prep, and Pour Stage Area on West Side of the Sweetwater Bandshell * Excavate, Pour Foundation, Form, and Prep W2A Planter Seatwall * Form, Prep, and Pour Flatwork Sections South of Sweetwater Bandshell Stairs | <ul style="list-style-type: none"> * Rework/Detail of Structural Steel Sections for Parkview TCT * Continue to Form, Prep, and Pour Flatwork on the North Shore * Form, Prep, and Pour Harrison Street Bridge Sidewalk Extensions * Install Landscaping Soils on North and South Shore Line * Continue Electrical Site Conduit Runs and Rough-Ins * Field Measure Rill Bridges Crossing Over the Kids Canal Water Feature * Install Landscaping Irrigation Lines Throughout the South Shore Site * Form, Prep, and Pour Superior Street ROW to Completion * Form, Prep, and Pour Sidewalk From Harrison ROW to Sweetwater Bandshell * Make Electrical Connections for Rill Equipment Within Rill Vault East of P.F. Pavilion * Demo Existing Concrete and Spoils From Wells Street * Start Installation of Treated Posts at the IPE Deck * Excavate and Install Gas Run For Fire Place Within Old National Bank Plaza |
|--|--|

Milestone Events

- * Completed W3E,D,C Terraced Seating @ Ambassador Ent. Amphitheatre Wk. of 4/1/19

North Site Progress Photos





Fort Wayne Riverfront Phase 1

River Work North/South Shore & Misc. Site Excavation



Weekly Progress Update for Week Ending 4/7/19

South Site Progress Photos

