



Fort Wayne Riverfront Phase 1 Park Foundation Pavilion



Weekly Progress Update for Week Ending 1/6/19

Past Week of Progress

- * Install Water Meter Within Equipment Room #118
- * Continue on T&G Cedar Ceiling Within Park Foundation Pavilion Event Space
- * Complete Installation of Limestone Cladding at Pavilion Dumpster Enclosure
- * Continue Exterior Canopy T&G Cedar Soffit and Around Exterior Restroom Entrances
- * Complete Installation of Restroom Accessories and Toilet Partitions

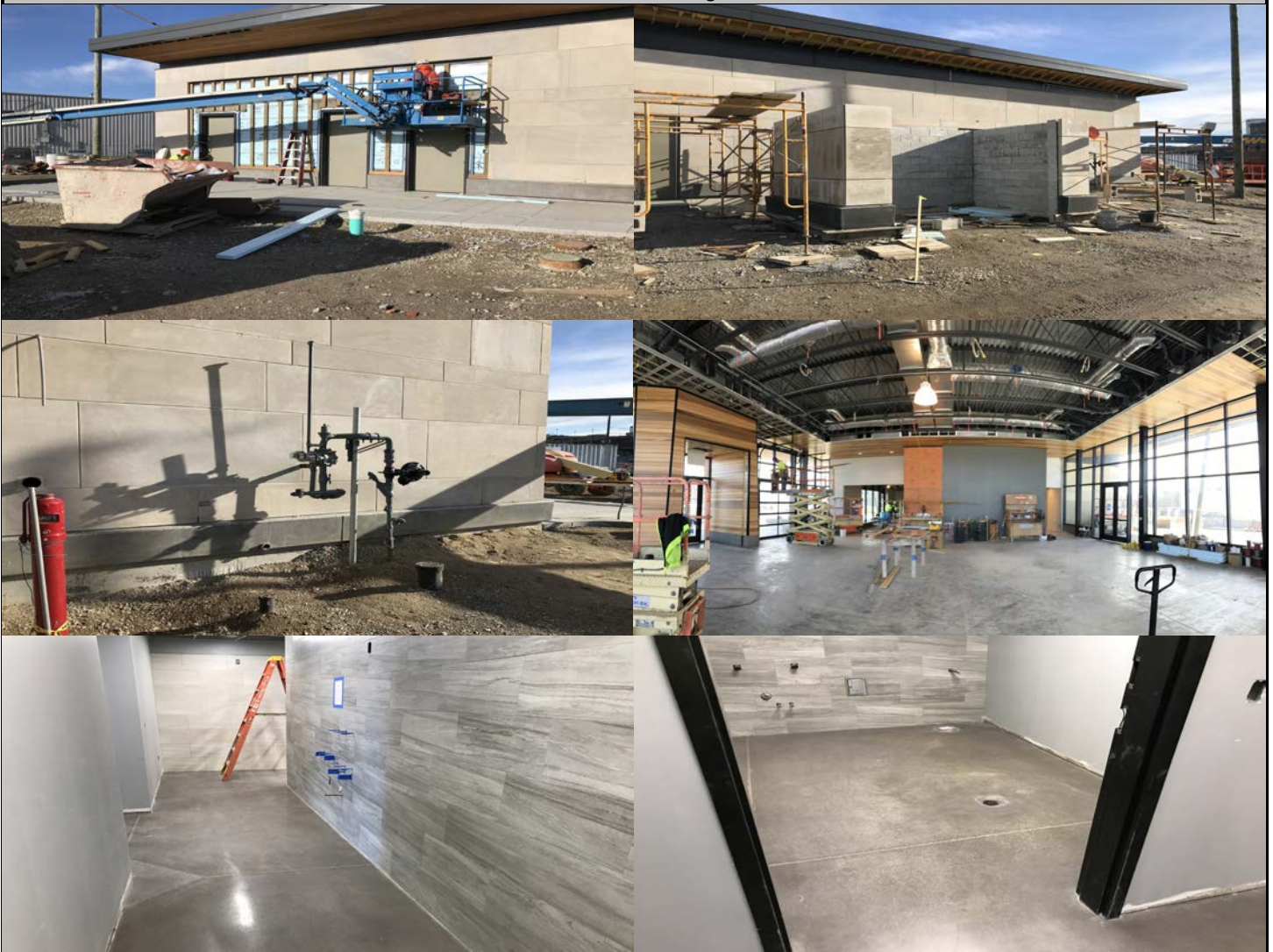
Next Week Look Ahead

- * Continue on T&G Cedar Ceiling Within Park Foundation Pavilion Event Space
- * Start Working on Plumbing Fixtures for the Event Space Restrooms Within Pavilion
- * Start Installation of Prefinished Metal Cap at West Canopy Skylights
- * Continue Exterior Canopy T&G Cedar Soffit and Around Exterior Restroom Entrances
- * Start Installation of Pre-Finished Metal Wall System at East Canopy Skylights

Milestone Events

- * Week of 1/28/19 Complete Interior T&G Cedar Ceiling Within Event Space

Park Foundation Pavilion Progress Photos





Fort Wayne Riverfront Phase 1

River Work North/South Shore & Misc. Site Excavation



Weekly Progress Update for Week Ending 1/6/19

Past Week of Progress

- * Unload One Parkview Tree Canopy Trail Section and Continue IPE Wood Decking
- * Excavate, Form, Prep, and Pour 1st Row of East W2 Seatwalls @ Turf Foundations
- * Form and Prep 1st Row of East W2 Seatwalls @ Turf
- * Excavate to Subgrade Beginning of Rill Water Feature Near Harrison/Superior Corner
- * Demo Existing Asphalt Parking Lot at South East Corner of Site and Haul Off Site
- * Continue to Excavate Foundations For Rill Water Feature Moving Towards South East
- * Form and Prep Rill Water Feature Foundations and Slab Moving Toward South East

Next Week Look Ahead

- * Deliver and Unload Parkview Tree Canopy Trail Section and Continue IPE Wood Decking
- * Continue to Form, Prep, and then pour 1st Row of East W2 Seatwalls @ Turf
- * Continue to Excavate Foundations For Rill Water Feature Moving Towards South East
- * Continue to Pour Concrete For 1st Row of W3 Terraced Seating
- * Continue to Excavate to Subgrade Beginning of Rill Water Feature Near Harrison/Sup.
- * Form, Prep, and Pour Rill Water Feature Foundations and Slab Moving Toward S.E.

Milestone Events

North/South Site Progress

