



Fort Wayne Riverfront Phase 1 Park Foundation Pavilion



Weekly Progress Update for Week Ending 11/25/18

Past Week of Progress

- * Form, Prep, and Pour Cool Gray Flatwork on South East/South Side of Pavilion
- * Continue T&G Cedar Siding at Vestibule (Interior)
- * Start Installation Will Tile In Interior Men's and Women's Restroom
- * Sawcut East Exterior Slab at Pavilion Per Design

- * Continue Detailing Event Space/Concessions Curtain Wall
- * Continue Exterior Canopy T&G Cedar Soffit
- * Detail OHD Locations With Pre-Finished Sheet Metal Trim
- * Work on Piping Rough-In for Rill Equipment Within Equipment Room 114

Next Week Look Ahead

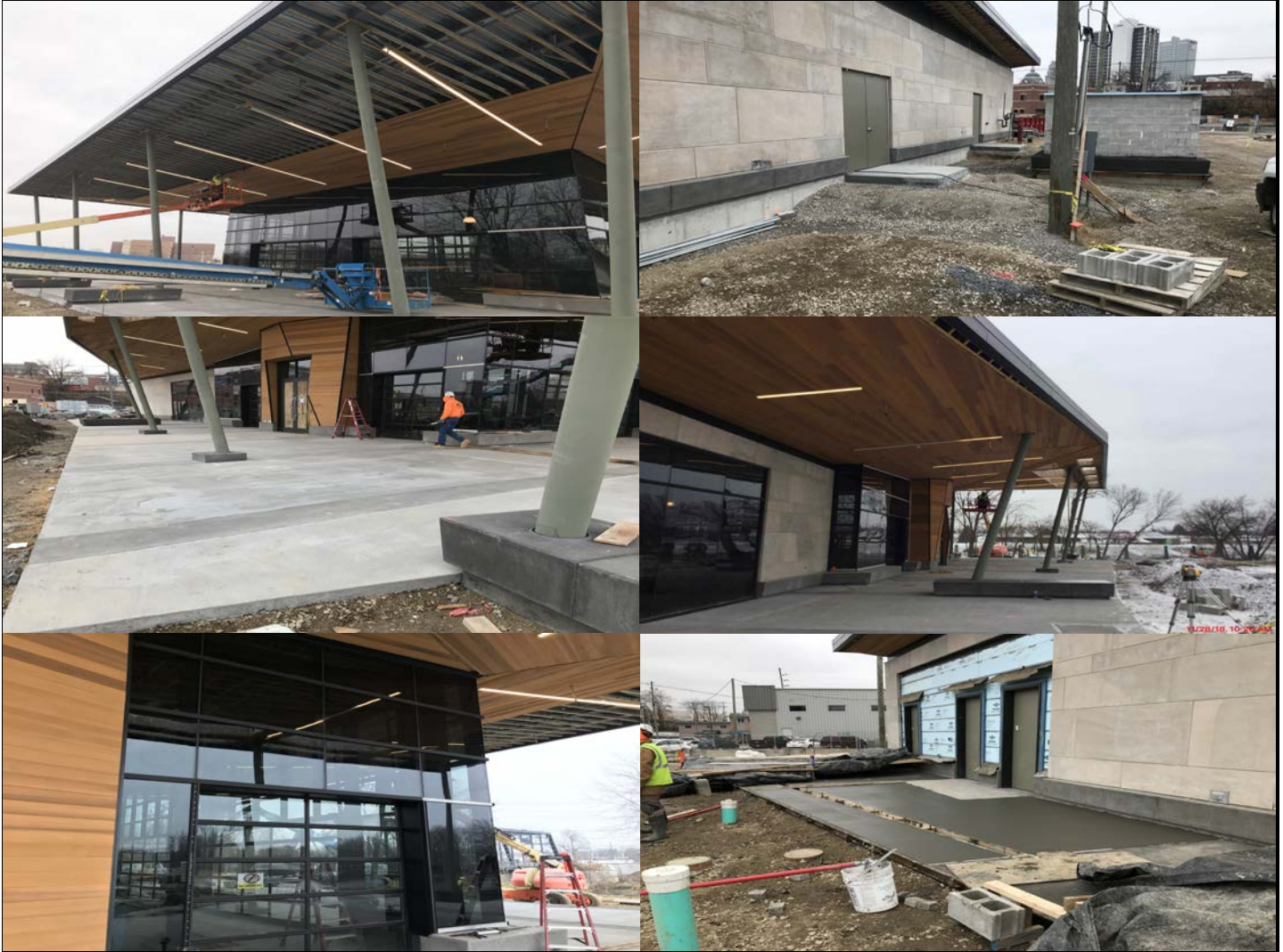
- * Continue Exterior Canopy T&G Cedar Soffit
- * Continue Installation Will Tile In Interior Men's and Women's Restroom
- * Sawcut South East/South Exterior Slab at Pavilion Per Design

- * Continue Piping Rough-In Within Rill Equipment Room 114 and Equipment Room 118
- * Continue Detailing Event Space/Concessions Curtain Wall
- * Continue T&G Cedar Siding at Vestibule (Interior)

Milestone Events

- * Week of 12/10/2018 Start Interior T&G Cedar Ceiling Within Pavilion Event Space

Park Foundation Pavilion Progress Photos





Fort Wayne Riverfront Phase 1

River Work North/South Shore & Misc. Site Excavation



Weekly Progress Update for Week Ending 11/25/18

Past Two Weeks of Progress

- * Continue Installation of Diverter Tank, Associated Piping and Water Jets
- * Installation of Piping Runs for Water Jets at Rotary Foundation
- * Start Excavation of Footings at W17 Lounger Seatwall and W2G Seat Wall at Turf
- * Pour Final Column #6 for Parkview TCT, Wreck Form, and Install Winter Protection
- * Start Backfill and Compaction at W17 Lounger Seatwall and W2G Seat Wall at Turf
- * Sets up Racks for AEP at Transformer Pad at SE End of Park Foundation Pavilion

Next Week Look Ahead

- * Install Pavers and Tree Grates at Harrison Street ROW
- * Complete Planter Seatwall Foundations at Convergence Sculpture
- * Fine Grade at W2G Seat Wall at Turf
- * Form, Prep, and Pour Superior Street ROW Sections
- * Miscellaneous Excavation for Electrical and Plumbing Subcontractors
- * Start Installation of IPE on Parkview Tree Canopy Trail Mock-Up

Milestone Events

- * Week of 12/3/18 Start Installation of IPE on Parkview Tree Canopy Trail Mock-Up

South Seawall/Site Progress Photos

