



# Fort Wayne Riverfront Phase 1

Park Foundation Pavilion



**Riverfront**  
FORT WAYNE  
Always moving.

## Weekly Progress Update for Week Ending 8/5/18

### Past Week of Progress

- |  |  |
|--|--|
| <ul style="list-style-type: none"> <li>* Finish Event Space T&amp;G Soffit Furring</li> <li>* Continue Overhead Electrical Rough-In/Lighting Fixture Installation</li> <li>* Continue Plumbing/Mechanical Wall and Ceiling Rough-In</li> <li>* Excavate and Install Concrete Rill Reservoir on East Side of Pavilion</li> <li>* Install Fluid Applied Membrane on Vestibule Sheathing</li> </ul> | <ul style="list-style-type: none"> <li>* Insulate and Install Sheathing at Vestibule</li> <li>* Continue Pre-Finished Metal Flashing at Canopy</li> <li>* Grind and Install Densifier on Seat Walls and Curb Walls at Pavilion</li> <li>* Make Plumbing Connections from Pavilion Rill Room to Reservoir</li> <li>* Install Gypsum Board Hard Lid Ceilings at all Public Bathroom Areas</li> </ul> |
|--|--|

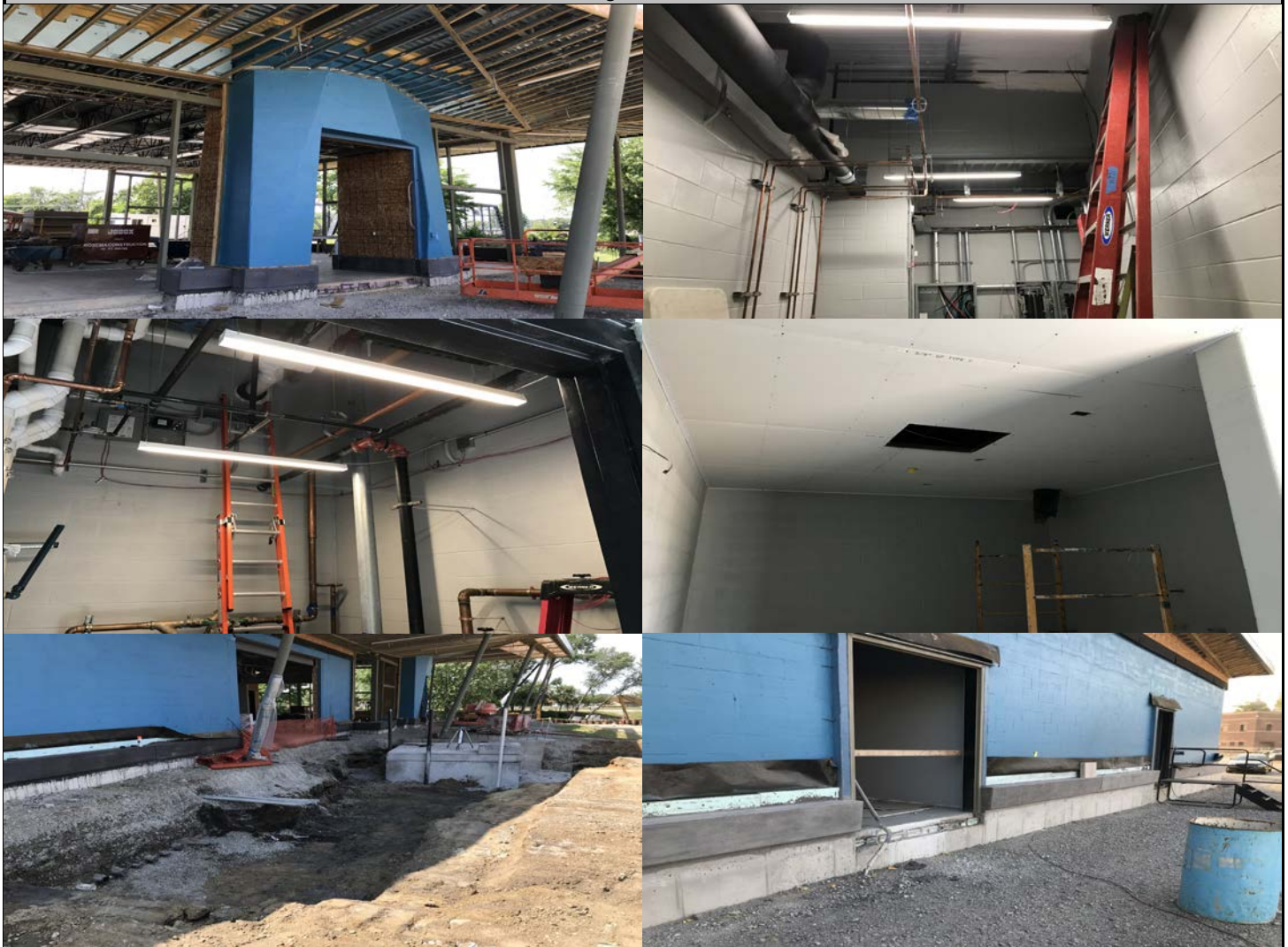
### Next Week Look Ahead

- |  |   |
|--|---|
| <ul style="list-style-type: none"> <li>* Finish Event Space T&amp;G Soffit Furring</li> <li>* Continue Overhead Electrical Rough-In/Lighting Fixture Installation</li> <li>* Continue Plumbing/Mechanical Wall and Ceiling Rough-In</li> <li>* Mud/Sand All Unfinished Gypsum Board Within the Pavilion</li> </ul> | <ul style="list-style-type: none"> <li>* Install Gypsum Board Hard Lid Ceilings at all Public Bathroom Areas</li> <li>* Continue to Grind and Install Densifier on Seat Walls and Curb Walls at Pavilion</li> <li>* Continue to Make Plumbing Connections from Pavilion Rill Room to Reservoir</li> </ul> |
|--|---|

### Milestone Events

- \* Started Seatwall Grinding and Densifier Application on 8/4/18

### Progress Photos







# Fort Wayne Riverfront Phase 1

## River Work North/South Shore & Misc. Site Excavation



### Weekly Progress Update for Week Ending 8/5/18

#### Past Week of Progress

- \* Prep, Pour Concrete, and Strip Forms for Pier #19-#20 Columns
- \* Complete Driving Piles Within North Seawall Cofferdam
- \* Bring Grade to Bottom of Footing at North Seawall and Start Forming Footing
- \* Start Backfill Around Pier 19#-#20 Columns
- \* Drive Sheets, Excavate and Drive Vertical/Battered Piles at Abutment #1

- \* Complete Excavation of North Seawall Cofferdam
- \* Continue North Seawall Cofferdam Bracing Installation
- \* Start Excavation and Drive Piles for Pier #5-#7
- \* Complete All Wall Section Pours at South Seawall

#### Next Week Look Ahead

- \* Continue Driving Piles and Bring Up Grade to Bottom of Footing at Abutment #1
- \* Complete Backfill Around Pier #19-#20 Columns and Pull Sheets at West End
- \* Start Excavation of Piers #1-#3 and Drive Vertical/Battered Piles
- \* Backfill within #8's at South Seawall and Bring Up to Subgrade

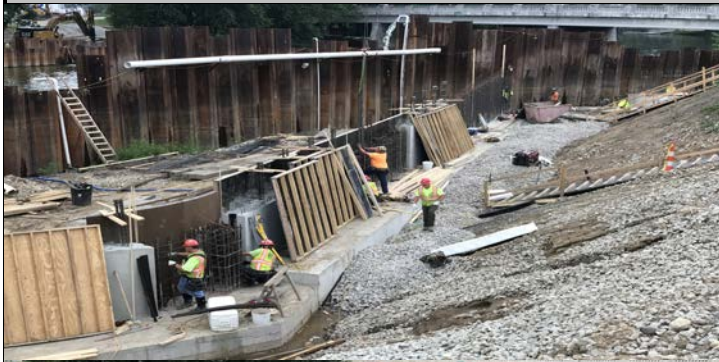
- \* Continue to Form, Prep, and Pour North Seawall Footings
- \* Reinstall Sheeting on East Side of Pier #19 to Encompass Piers #15-#18
- \* Patch Form Ties and Install Self-Adhering Joint Membrane at South Seawall

#### Milestone Events

\* Place Concrete for North Seawall Footings Week of 8/6/18

\* Place Concrete for Pier #17-#18 Columns Beginning of Week 8/20/18

#### South Seawall Progress Photos







# Fort Wayne Riverfront Phase 1

## River Work North/South Shore & Misc. Site Excavation



### Weekly Progress Update for Week Ending 8/5/18

#### North Shore Progress Photos (Parkview TCT & North Seawall)

