



Fort Wayne Riverfront Phase 1

Park Foundation Pavilion



Riverfront
FORT WAYNE
Always moving.

Weekly Progress Update for Week Ending 5/13/18

Past Two Weeks of Progress

- | | |
|---|---|
| <ul style="list-style-type: none"> * Continue Installing Mechanically Fastened Roofing System * Continue HVAC Duct Runs * Continue Plumbing Wall Rough-In * Continue Plumbing Pipe Insulation * Continue CMU Wall Block Filling/Paint * Hang Electrical Panel Boxes in Water Equipment Room 114 | <ul style="list-style-type: none"> * Continue Metal Stud Framing Throughout Pavilion (Wall and Ceiling) * Continue Form, Prep and Pour Concrete Seat Walls and Curb Wall Around Pavilion * Continue Electrical Wall Rough-In * Continue Fluid-Applied Membrane Air Barrier * Complete Fire Riser in Equipment Room 118 * Continue Installing OSB Sheathing and Furring at Canopy Openings |
|---|---|

Next Week Look Ahead

- | | |
|---|---|
| <ul style="list-style-type: none"> * Finish Installing Mechanically Fastened Roofing System * Continue HVAC Duct Runs * Exterior Limestone Cladding Delivery and Start Install on East Face of Pavilion * Continue CMU Wall Block Filling/Paint | <ul style="list-style-type: none"> * Continue Metal Stud Framing Throughout Pavilion (Wall and Ceiling) * Continue Form, Prep and Pour Concrete Seat Walls and Curb Wall Around Pavilion * Finish Plumbing Pipe Insulation |
|---|---|

Milestone Events

- * Start Exterior Limestone Cladding Week of 5/14

Progress Photos





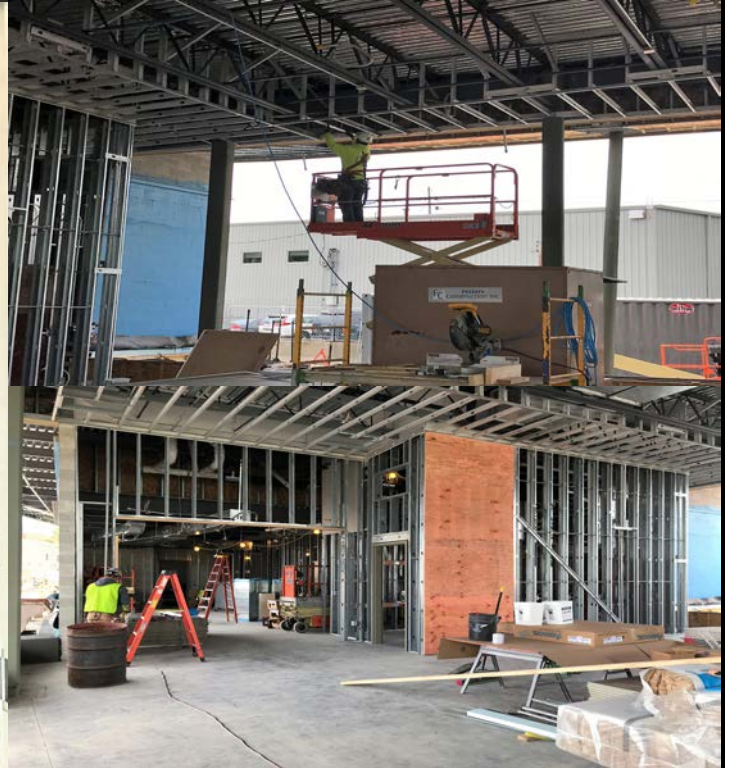
Fort Wayne Riverfront Phase 1

Park Foundation Pavilion



Weekly Progress Update for Week Ending 5/13/18

Progress Photos Continued





Fort Wayne Riverfront Phase 1

River Work North/South Shore & Misc. Site Excavation



Weekly Progress Update for Week Ending 5/13/18

Past Two Weeks of Progress

- | | |
|--|---|
| * Complete Mass Excavation to Subgrade Within South Cofferdam | * Continue Dewatering South Cofferdam |
| * Excavate/Install/Backfill SA-8 Grease Trap & 85LF of 6" San. Running South from SA-8 | * Patch and Fill Leaks in Sheeting in South Cofferdam |
| * Backfill ST-11 Structure and 32LF of 15" STM Running South to River | * Reposition Well Points in South Cofferdam |

Next Week Look Ahead

- | | |
|--|--|
| * De-Energize High Transmission Line Running Above Abutment #2 | * Install Sheeting/Excavate/ Drive H-Piles for Abutment #2 |
| * Start South Sea Wall Footing Excavation Within Cofferdam and Start Driving H-Piles | * Layout SA-4 Control MH and Excavate Upon Approval |
| * Continue Sheet Feeding SPS on North Shore | * Sheeting for Piers 8-10 (Tentative) |

Milestone Events

- * Complete Sheeting/H-Piles for Abutment #2 by 5/17/18

Progress Photos

